

Zigbee Motion Detector



Ref: 1811681
EN User guide
CN 用户指南



1. SAFETY AND IMPORTANT INFORMATION

Read this user guide carefully before installing and using the Somfy Zigbee Motion Detector.

This user guide describes the installation, commissioning and use of the products. Before beginning installation, make sure that the Somfy Zigbee Motion Detector is compatible with the equipment and associated accessories.

Any incorrect use will invalidate the warranty and Somfy's liability.

! CAUTION

- This product is designed for indoor use only.
- Always keep this product dry.
- To prevent fire or shock hazard: Do not expose the product to excessive heat by heating equipment or direct sunlight.
- No naked flame sources, such as lighted candles, should be placed nearby the product.
- Do not allow your product to be submerged in water.
- This product shall not be exposed to dripping or splashing.
- To clean the product, use a soft cloth with plain water to swipe. Do not use cleansing agents containing alcohol, spirits, ammonia or abrasives as they may harm the product.
- Do not disassemble the product.
- Do not operate the product in a place where temperature is below -10°C or above 45°C.
- Do not allow the children to access the product during the installation.
- Replace the new battery to the correct (+) & (-) polarity as shown in the battery compartment.
- Dispose the used battery in a proper place where the children cannot access, swallowing the battery will lead to the injury OR death of the children.
- Remove the battery and safe keeping if you don't use this product for a long time.
- Batteries (battery pack or batteries installed) shall not be exposed to excessive heat such as sunshine, fire or the like.

2. PACKAGE CONTENT

1. Zigbee Motion Detector x 1
2. Bracket x 1
3. 3M tape x 1
4. CR2450 x 1 (3V dc)
5. User guide x 1 (Simplified Chinese + English)

3. PRODUCT DESCRIPTION

Somfy Zigbee Motion Detector is designed for use with scenes in home automation systems under zigbee HA 1.2 protocols, the Zigbee Motion Detector lets you know when movement is detected in a certain area and can trigger different actions in response to that movement (or lack of movement).

This device is compatible with SOMFY gateway (i.e. TaHoma Bee) or devices for remote control & interoperation.

Before the installation, please read the below note:

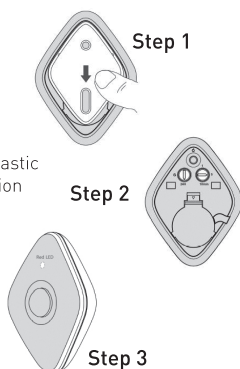
1. The device detection of angle and range is 110°@10m*6m he device should be installed at the area which inside the detective coverage & detective angle (i.e. 10m x 6m @ 110°). Recommend to install at 2.0m to 2.6m above the ground.
2. Avoid to install the device near the air-conditioner, electric fans, refrigerators, ovens or other places where the temperature change easily.
3. To accurate the detecting result, no object should be placed in front of the detecting lens.
4. Concrete wall OR Metallic objects will shorten the distance of wireless communication.

4. INSTALLATION

Step 1:
Remove the bracket from the Zigbee Motion Detector.

Step 2:
At first time to install the product, please remove the plastic tab from the battery compartment to allow the connection to the terminal.

Step 3:
Zigbee Motion Detector will be in pairing status when power turns on at the first time. This will cause a LED indicator to flash once per second. If sensor enrolled successfully, it will stop blinking and stay on for 10 seconds.



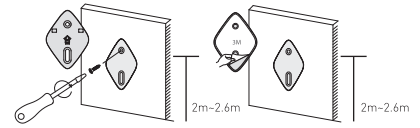
* Step 4a: (Mounted by screws)

Drill the hole on the desired location then mounted the bracket by screws.

* Step 4b: (Mounted by 3M adhesive tape)

Seal off the 3M adhesive tape on the bracket then stick it at the desired location.

* Mounting Height recommend in 2m ~ 2.6m above the ground



Step 5:

24 Hours/Night operation and off-delay mode can be set from the APP or physical switch in preference. Assembly the sensor to the bracket, then the installation finished.

5. USE YOUR PRODUCT

1. Reset:
After powered ON the Motion Detector, press & hold the key for 3 seconds to reset the Motion Detector, LED indicator will blink quickly (100ms on, 100ms off). Once release the key, the Motion Detector will reset to factory fresh setting and the signal light blinks once per second to search a new enabled Zigbee network. Reset procedure deletes memory, including all information on the Zigbee network and the gateway. The detector will be under pairing mode & the App or gateway could pair the Motion Detector at instant.
2. Set Mode Switch: 24-Hour mode and night mode.
24-Hour mode-motion sensor is active for whole day. Night mode motion sensor is active for night only.
3. Battery cover
4. Off Delay time switch: Off Delay time can select for 1, 5 or 10 minutes after the sensor triggered. Once the sensor is triggered, it would turn off for 1, 5 or 10 minutes then reactivate.
5. LED Indicator:
After the detector is reset to the factory fresh setting, the signal light blinks once per second and detector starts searching an enabled Zigbee network. If sensor enrolled successfully, it will stop blinking and stay on for 10 seconds then turn off; If no available networks were found within 3 minutes, detector will stop blinking and turn off.

Tip

When initially setting up the Zigbee Motion Detector, it is recommended to perform the setup task within 15 feet (4.5 meters) of the Zigbee Router.



Pairing to Gateway (Scan QR code)

1. Set the gateway (i.e. TaHoma Bee) in device pairing mode.
[Configuration -> Add -> Zigbee device]
2. Scan the QR Code on the product label.
3. Check the icon of "Motion Detector" exists in the App.
4. Follow the instructions to join the Network.

Alert Low Voltage status to replace the battery

The detector inside the Motion Detector will send the signal to alert the gateway while in low battery status. Replace the battery timely on low battery warning to ensure the detector works properly. To replace the battery, open the battery compartment and install the new battery into the sensor.

6. TECHNICAL SPECIFICATION

Model	1811681
Power Supply	3V dc, CR2450 x 1
Product Package	Zigbee Motion Detector x 1
Detective Angle	110°C
Detective Coverage	10m x 6m @ 110°
Mounting Method	Screws or 3M Tape
Mounting Height	2.0m to 2.6m above the ground
RF Protocol	Zigbee HA 1.2
Radio Frequency	2.4GHz
Maximum RF Power	<10dBm
RF distance	40 meters * RF distance would be affected by specific material, such as mirror, metal, or high power electronic devices
Battery Life	~ 2 years (Determined under 4 times per day) * Subject to change for the use frequency
Low Battery Detection	Support to send the "Low Battery" status to the Gateway
Operating Temperature	-10 - 45°C
Relative Humidity	10% - 85%
Dimensions	84.4mm x 63.4mm x 26.3mm
Weight	~ 30g

7. TROUBLESHOOTING

Problem	Possible Causes	Solutions
Can't turn on the sensor	Out of battery	Please replace the new battery per the instruction
Pairing failed	Network settings are incorrect	Check the gateway setting
Can't operate the device through the App	Mobile can't connect to the gateway	Check the wireless setting in the mobile