



25/11/1999

LT 50 TECHNICAL DATA

DMKI - FPTE
RANGE 6
LT50Range6R2

Nominal voltage	220 V - 60 Hz
Power supply tolerances	190 - 235V
Thermal time	5 minutes
Number of wires of the cable	4
Wire section	0,75 mm ²
Type of limit switch unit	Quick limit switch
Capacity of the LSU	46 turns
Repeatability	± 5°
System of protection	IP 44
Interface drawings	Screw implantation for LT50 mounting 206810-Wheel interface LT50 206821-Crown interface LT50 206822-Interface drawing star head LT50 and LT50PA/PS 206823-Interface drawing LT50&60 buttons 206817.
Basic crown for tube Ø	50 x 1,5 mm
Temperature working range	Normal use : -10°C to +40°C Exceptional use (20% of the life time not continuous) : -25°C to + 70°C
Noise level	According to SOMFY measures (for information only).Worse value : in load up direction during 10 seconds.

Designation	Nm	rpm	reference	mm	mm	mm	mm	W	A	°C	Brake type	kg	dBA
	Nominal torque	Nominal speed		L1 max.	L2 (±3 mm)	L3 max.	tube	Rated power	Rated current	Thermal tripping		Weight	Noise
503S6	3	38	200329	505	490	513	440	100	0,45	140	sliding	1,72	-
505S6	5	38	901156	525	510	533	460	105	0,5	140	sliding	1,85	55
506A6	6	20	901152	505	490	513	440	70	0,35	140	sliding	1,72	-
508A6	8	20	901153	525	510	533	460	105	0,5	140	sliding	1,85	-
509F6	9	64	200382	605	510	613	540	240	1,1	140	sliding	2,25	-
514A6	14	20	601154	525	510	533	460	140	0,65	150	sliding	1,95	-
518A6	18	20	901155	555	540	563	490	170	0,8	150	sliding	2,15	-
528R6	28	14	901151	555	540	563	490	175	0,85	150	sliding	2,2	-
538R6	38	14	901150	605	590	613	540	210	1	150	sliding	2,55	57

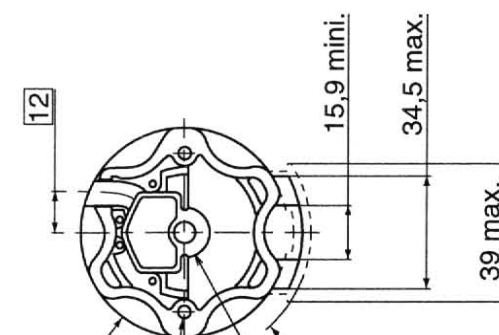
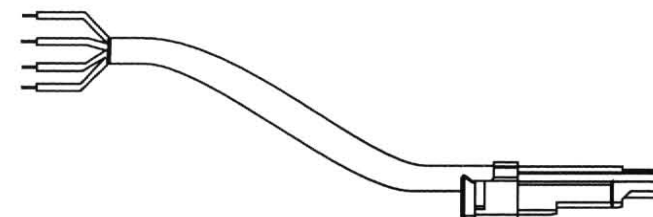
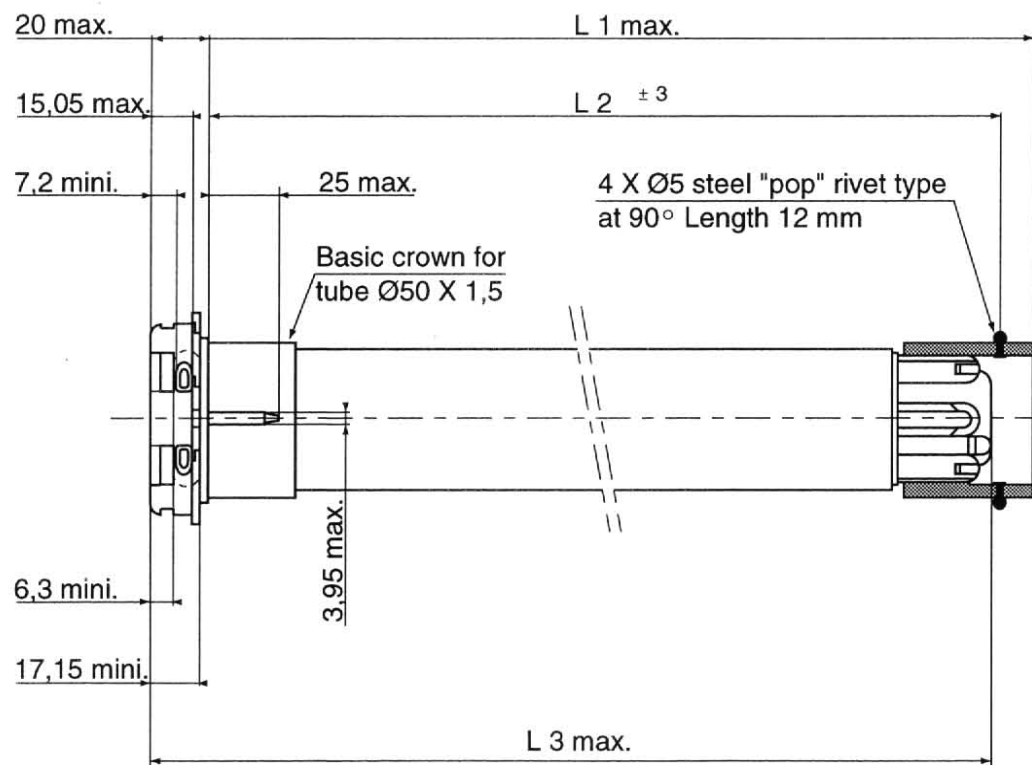


25/11/1999

LT 50 TECHNICAL DATA

RANGE 6

WRING	Neutral	Blue
	White button	Brown
	Yellow button	Black
	Earth	Green / Yellow



Ø63 maxi.

2 holes for self-cutting screw Ø5 with entre-axe 48 mm ± 0,15

Ø78 max.

Hole Ø12 mini. and depth 23 mini.

Visa : DT Quality GMD